

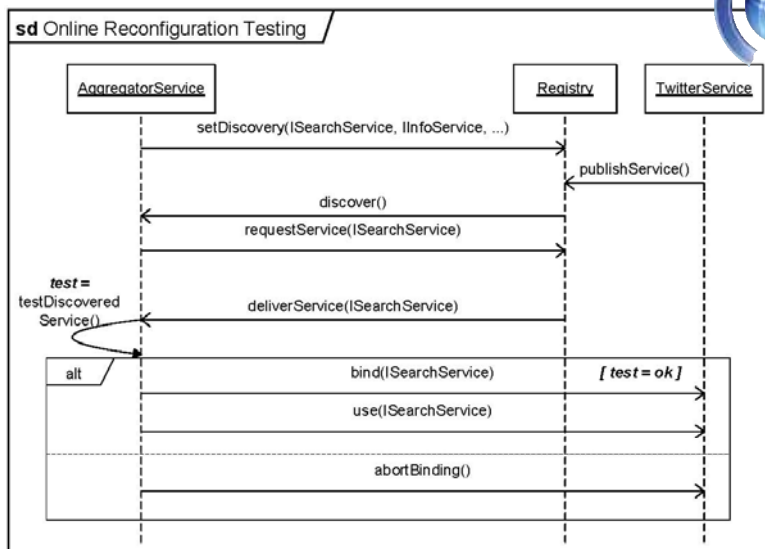
# Automated Runtime Testability of SOA Composites

Michaela Greiler, Hans-Gerhard Gross and Arie van Deursen

## Service-Oriented Architecture (SOA) Testing Challenges

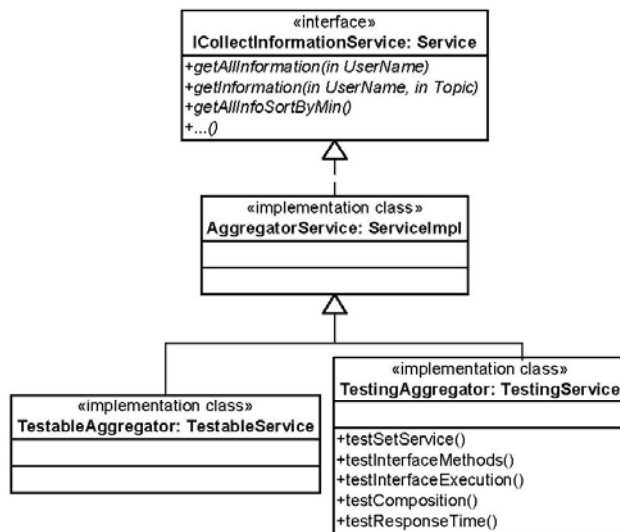
Inaccurate test environment, because of stakeholder separation, limited information, control and influence, distributed environments, system states...

### System Reconfiguration Testing



### Built-In Testing

Testability and Testing



## Case Studies

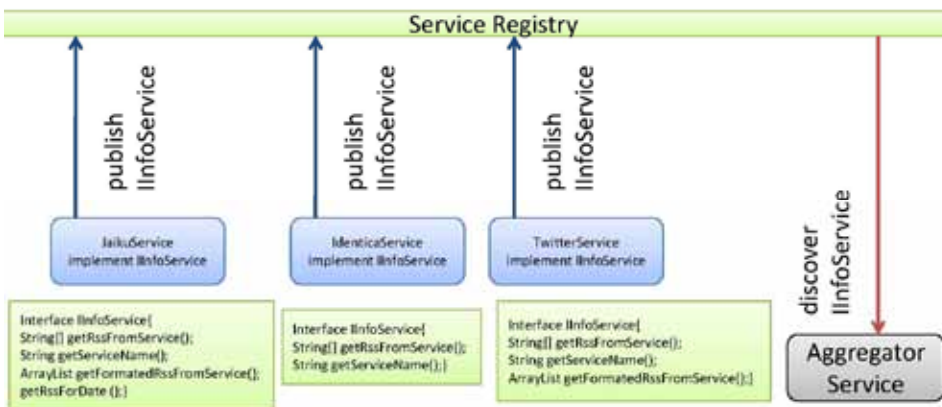
Industrial Case Studies with Logica & Open-Source Case Studies

### Typical Reconfiguration Faults

- Classification
- Impact
- Detection

### OSGI

Analysis and Enhancement of Open Service Gateway Initiative frameworks



## Expected Outcomes

1. A new approach for online testing to detect state-based faults
2. A series of fault models classifying faults that appear especially in production environments
3. Empirical evidence concerning the effectiveness of the proposed approach
4. An open source tool for online test support, including generation and execution of test cases

Michaela Greiler, Hans-Gerhard Goss and Arie van Deursen

More information & download:  
<http://swert.tudelft.nl/bin/view/ARTOSC/>



SERG – Software Engineering Research Group  
<http://www.se.ewi.tudelft.nl/>

Delft University of Technology