

Architectural View Reconstruction through Dynamic Analysis

Bas Cornelissen and Andy Zaidman
{s.g.m.cornelissen, a.e.zaidman}@tudelft.nl

Reconstruction of architectural views using *dynamic analysis*,
i.e., the study of a system's behavior

Unknown system

Industrial or open
source software

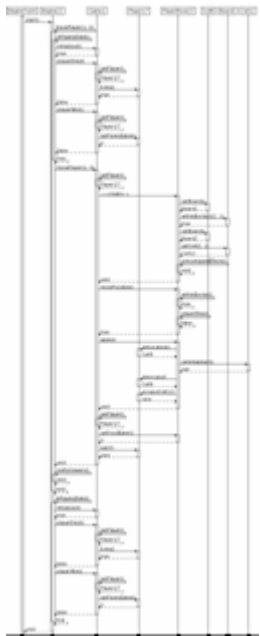
Instrumentation

Aspect weaving using
AspectJ

Execution

Typical scenarios:
e.g., testcases

Abstracted
visualizations

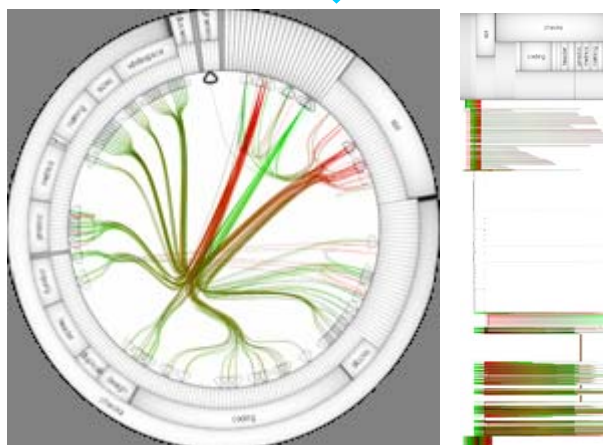


UML sequence diagrams:
focusing on *readability*



Future
visualizations

Novel
visualizations



EXTRAVIS: emphasizing *scalability*
Collaboration with TU/e
<http://swerl.tudelft.nl/extravis>

Best of both worlds

- human readable
- scalable

Architectural level

- abstractions
- component & connector views

Large case studies

- industrial partners
- open source

Evaluation

- verify with experts
- conduct controlled experiments